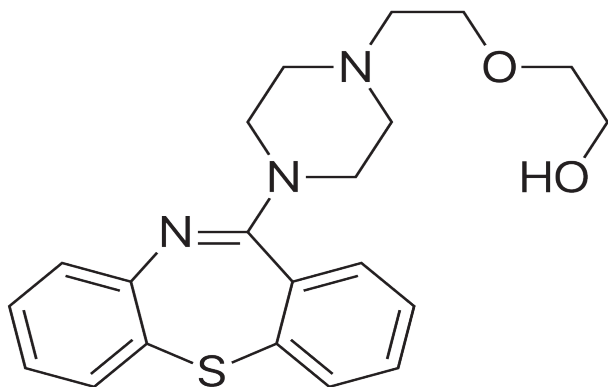


# Quetiapine In Blood, Plasma/Serum, Urine And Tissue Using: 200 mg Clean Screen® Extraction Column



## UCT Part Numbers

**ZSDAU020**  
Clean Screen® DAU  
10 mL, 200 mg sorbent

## Procedure:

### 1. Prepare Sample

- To 1 mL of 100 mM phosphate buffer (pH= 6) add internal standard.\* Add 1 mL blood, plasma/serum, urine or 1 g (1:4) tissue homogenate.
- Add 2 mL of 100 mM phosphate buffer (pH= 6).
- Sample pH should be  $6.0 \pm 0.5$ .
- Adjust pH accordingly with 100 mM monobasic or dibasic sodium phosphate.
- Centrifuge as appropriate.

### 2. Condition Clean Screen® Extraction Column

- 1 x 3 mL  $\text{CH}_3\text{OH}$ .
  - 1 x 3 mL D.I.  $\text{H}_2\text{O}$ .
  - 1 x 3 mL 100 mM phosphate buffer (pH=6).
- Note:** Aspirate at < 3 inches Hg to prevent sorbent drying out.

### 3. Apply Sample

- Load sample at 1-2 mL / minute.

### 4. Wash Column

- 1 x 3 mL 100 mM phosphate buffer (pH 6).
- 1 x 3 mL 1.0 M acetic acid.
- 1 x 3 mL  $\text{CH}_3\text{OH}$ .
- Dry column (5 minutes at > 10 inches Hg).
- 1 x 3 mL of hexane.
- Dry column (5 minutes at > 10 inches Hg).

### 5. Elute Quetiapine

- 1 x 3 mL ethyl acetate; acetonitrile: ammonia (78: 20: 2 v/v).
  - Collect eluate at 1-2 mL /minute.
- Note:** Prepare elution solvent daily.

### 6. Evaporation

- Evaporate eluates under a gentle stream of nitrogen < 40°C.

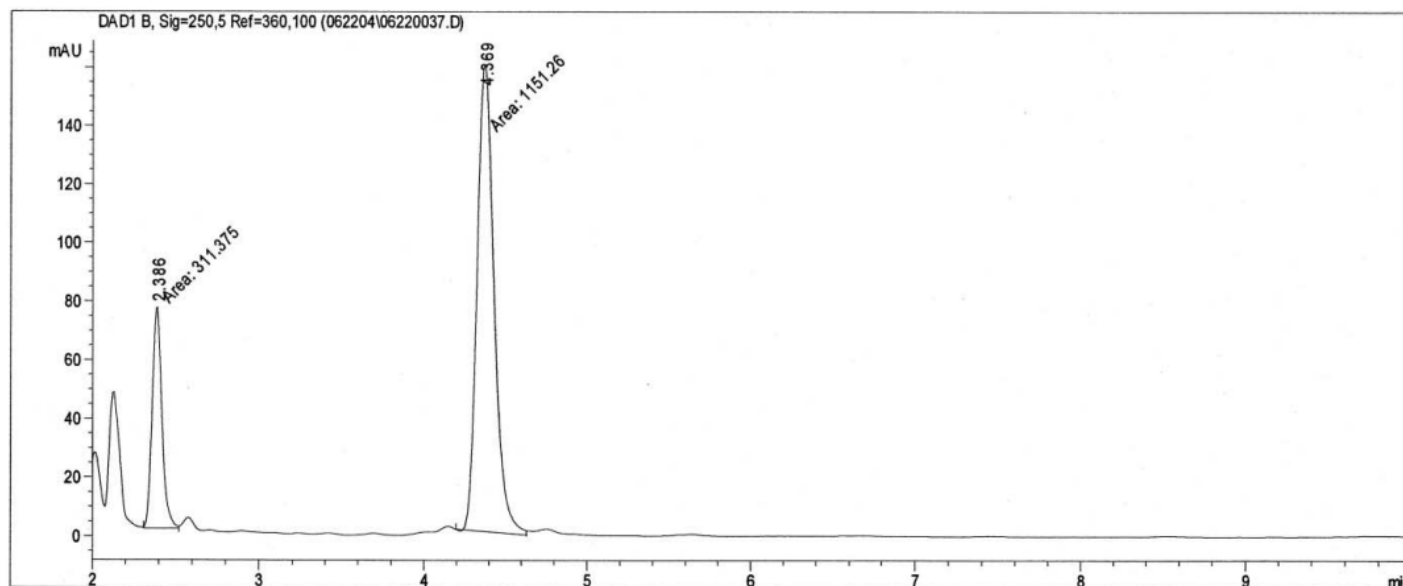
### 7. Reconstitute

- Reconstitute sample in 100  $\mu\text{L}$  0.1% trifluoroacetic acid (aq).
- Inject 50  $\mu\text{L}$ .



**INSTRUMENT CONDITIONS**

Column	C18 150 x 4.6 mm (3 µm) Zorbax (Agilent Technologies)
Mobile Phase	0.1% Trifluoroacetic acid (25: 75)
Flowrate	1 mL / min
Column Temperature	35° C
Detector	Diode Array (250 nm)

**Chromatogram:****Cerilliant Part #**

Q001

Quetiapine

\*Quinidine

UCT, LLC • 2731 Bartram Road • Bristol, PA 19007 800.385.3153 • 215.781.9255

[www.unitedchem.com](http://www.unitedchem.com) Email: [methods@unitedchem.com](mailto:methods@unitedchem.com)

©UCT, LLC 2023 • All rights reserved

