

Bath Salts In Urine For LC-MS/MS Confirmations Using: 200 mg Clean Screen® Extraction Column



UCT Part Numbers

CSDAU206
CLEAN SCREEN® DAU
200 mg / 6 mL SPE Tube

Procedure:

1. Prepare Sample

- To 1 mL of 100 mM phosphate buffer (pH=6) add internal standard(s)* Add 1 mL of urine. Add 2 mL of 100 phosphate buffer (pH=6). Mix/vortex
- Sample pH should be 6.0 ± 0.5
- Adjust pH accordingly with 100 mM monobasic or dibasic sodium phosphate
- Mix/vortex
- Centrifuge as appropriate

2. Condition Clean Screen® Extraction Column

- 1 x 3 mL CH₃OH
 - 1 x 3 mL D.I. H₂O
 - 1 x 1 mL 100 mM phosphate buffer (pH=6)
- Note:** Aspirate at < 3 inches Hg to prevent sorbent drying.

3. Apply Sample

- Load sample at 1 to 2 mL/minute

4. Wash Column

- 1 x 3 mL DI H₂O
- 1 x 3 mL 100 mM Acetic Acid
- 1 x 3 mL CH₃OH
- Dry column (5 minutes at > 10 inches Hg)

5. Elute Drugs

- 1 x 3 mL CH₂Cl₂/IPA/NH₄OH (78: 20: 2 v/v)
Note: Prepare elution solvent daily. Add IPA/NH₄OH, mix, then add CH₂Cl₂
- Collect eluate at 1-2 mL /minute.

6. Dry Eluates

- Evaporate eluate under a gentle stream of nitrogen < 40°C. Dissolve residue in 100 µL of mobile phase.
- Inject 5 µL

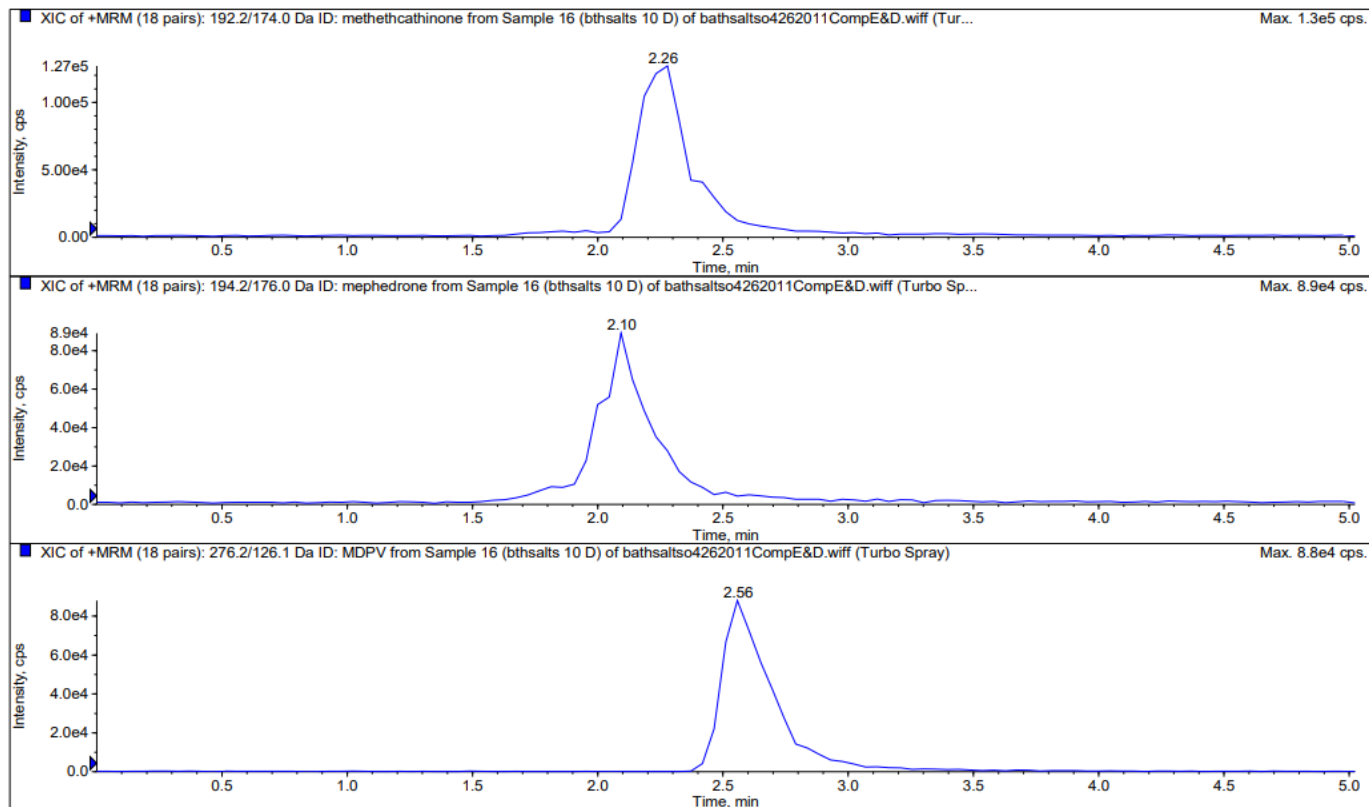


Instrument Conditions	
Column	100 x 2.1 mm (3µm) SELECTRA® Phenyl UCT, Inc.
Column Temperature	40°C
Flowrate	0.2 mL/ min
Detector	API 4000Qtrap MS/MS

Mobile Phase		
Time (min)	% Acetonitrile	% 0.1 % Formic Acid
0	50	50
5	50	50

Compound	MRM Transition	Lipomed #
Butylone	222.1/174	BTL-128
Flephedrone	182.2/164	FMC-1291
MDPV	276.2/126	PYR-1340
Mephedrone	194.2/146	MMC-1252
*Mephedrone-D3	197.2/150	MMC-1271
Methedrone	192.2/124	MTH-1290
Methethcathinone	192.2/174	MEC-1299
Methylone	208.1/160	MTY-1289



Chromatogram of Methethcathinone, Mephedrone, and MDPV, extracted from urine at 10 ng/ mL**DCN-116240-218**

UCT, LLC • 2731 Bartram Road • Bristol, PA 19007 800.385.3153 • 215.781.9255

www.unitedchem.com Email: methods@unitedchem.com

©UCT, LLC 2011 • All rights reserved

