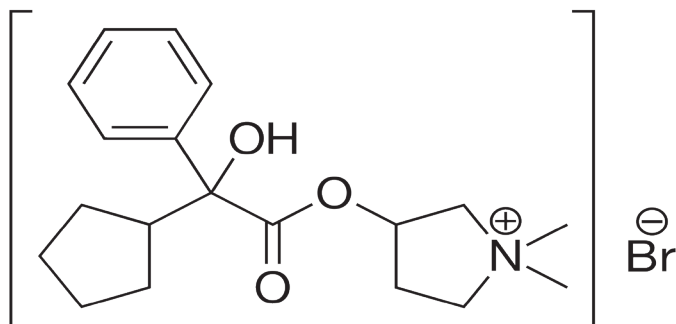


Glycopyrrolate (Robinul) From Equine Urine By LC-MS/MS Using: 500 mg Clean Up® CCX2 Extraction Column



UCT Part Numbers

CEC081L1
Clean Up® C8
Endcapped 50mg 1mL
Column

Procedure:

1. Sample Preparation

- Buffer 5 mL of urine to pH 7.0 by adding 3 mL of 100 mM phosphate buffer (pH 7.0).
- Add (12.5 ng) of mepenzolate (internal standard).
- Add 5 mL of water to the sample.
- Vortex or shake thoroughly.
- Centrifuge for 5 min at 800 rpm.

2. Condition Clean Up® Extraction Column

- 1 x 3 mL CH₃OH.
- 1 x 3 mL D.I. H₂O.
- 1 x 1 mL 100 mM phosphate buffer (pH 7.0).

3. Apply Sample

- Decant supernatant onto SPE column.
- Load at 1 to 2 mL / min.

4. Wash Column

- 5 mL of CH₃OH.
- 5 mL of D.I. H₂O.
- 5 mL of D.I. H₂O.

5. Elute Glycopyrrolate

- 1 x 4 mL CH₃OH/0.5 M NH₄OAC buffer, pH 3.0 (95:5).

6. Dry Elute

- Evaporate to dryness at 60°C.
- Reconstitute with 100 µL CH₃OH.

7. Quantitate

- Inject 10 µL onto HPLC.



UCT, LLC • 2731 Bartram Road • Bristol, PA 19007 800.385.3153 • 215.781.9255

www.unitedchem.com Email: methods@unitedchem.com

©UCT, LLC 2008 • All rights reserved

